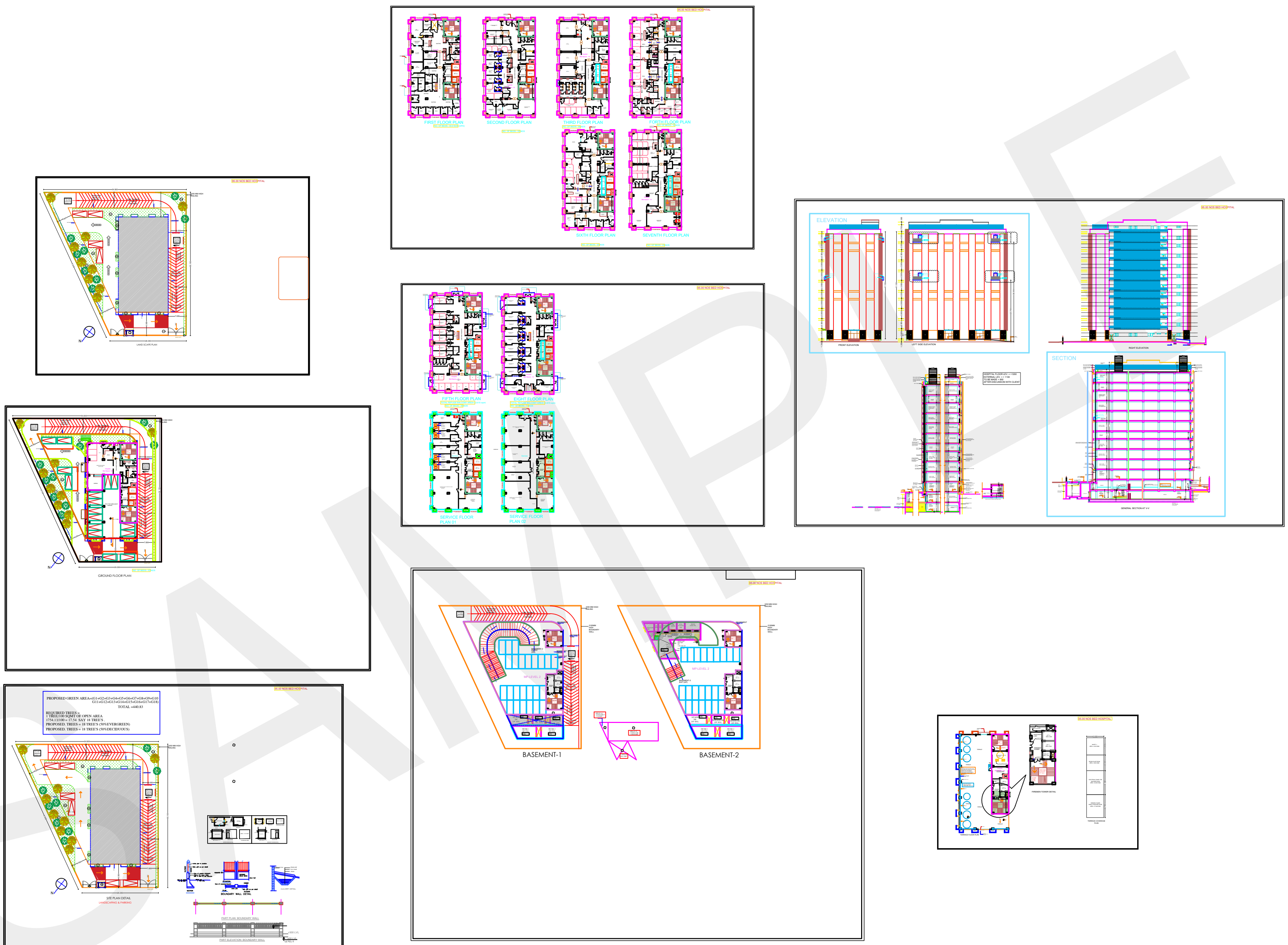
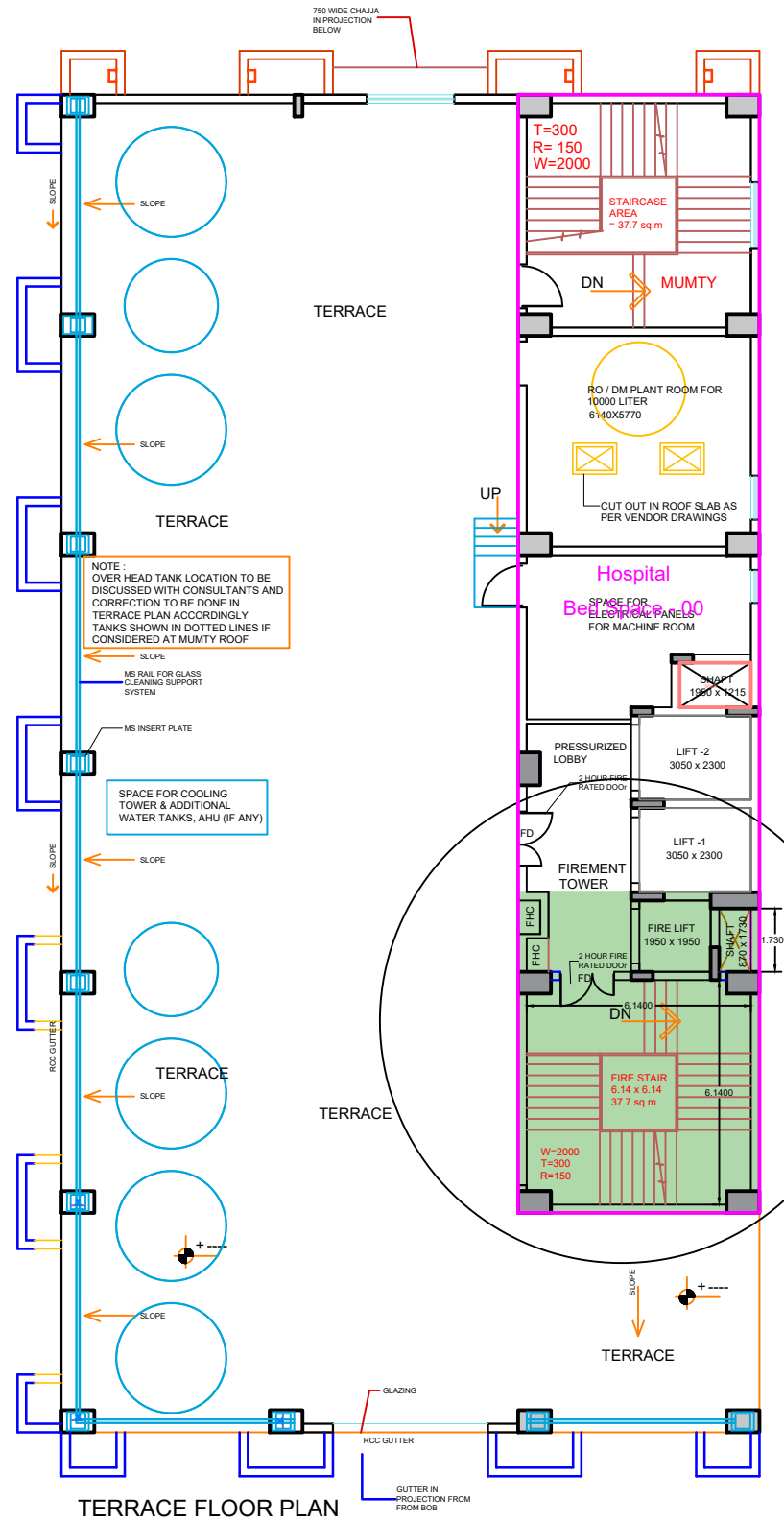


PLOT AREA = 2442.45 Sq.Mt.
LAND USE = COMMERCIAL
PREMISES USE = HOSPITAL (31)

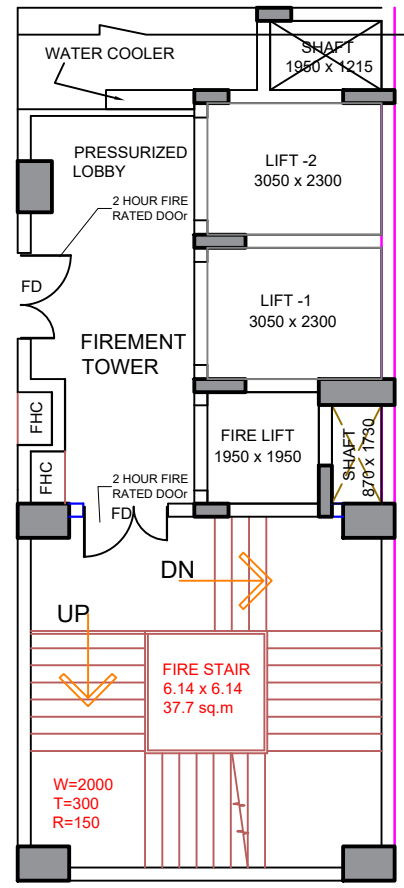
(For Gr.Cov. & FAR Refer FAQ)

SET BACK :- Front- 9.0 Mt. All Other Side - 6.0 Mt.

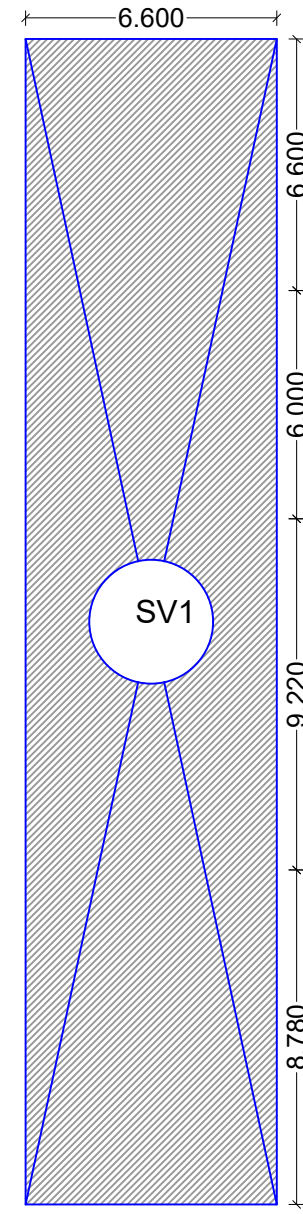




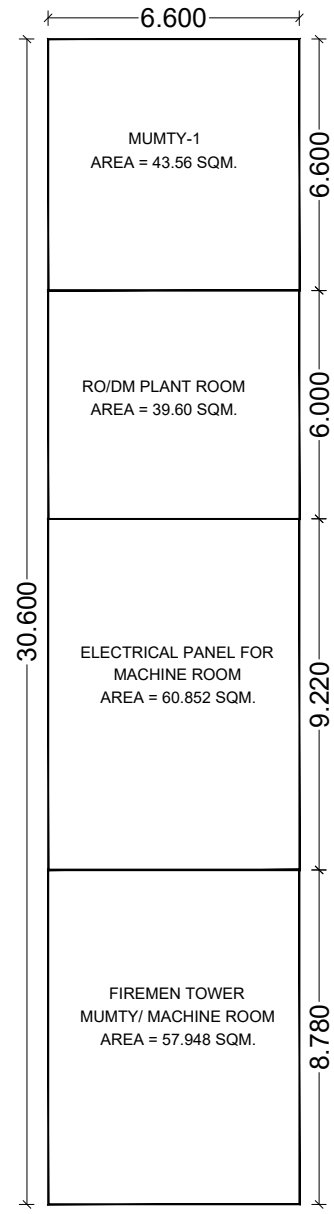
TERRACE FLOOR PLAN



FIREMEN TOWER DETAIL

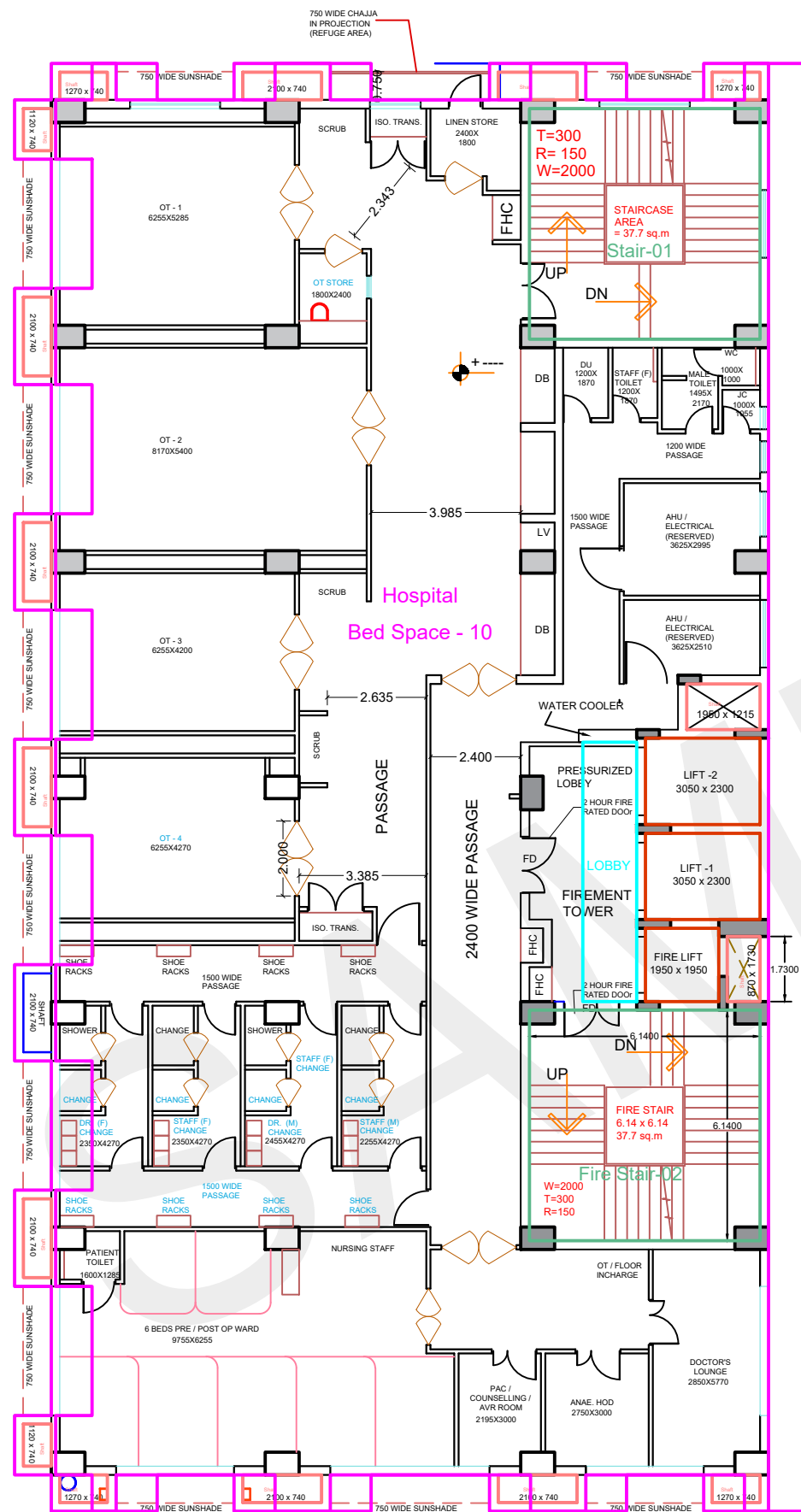


TERRACE ENVELOP PLAN



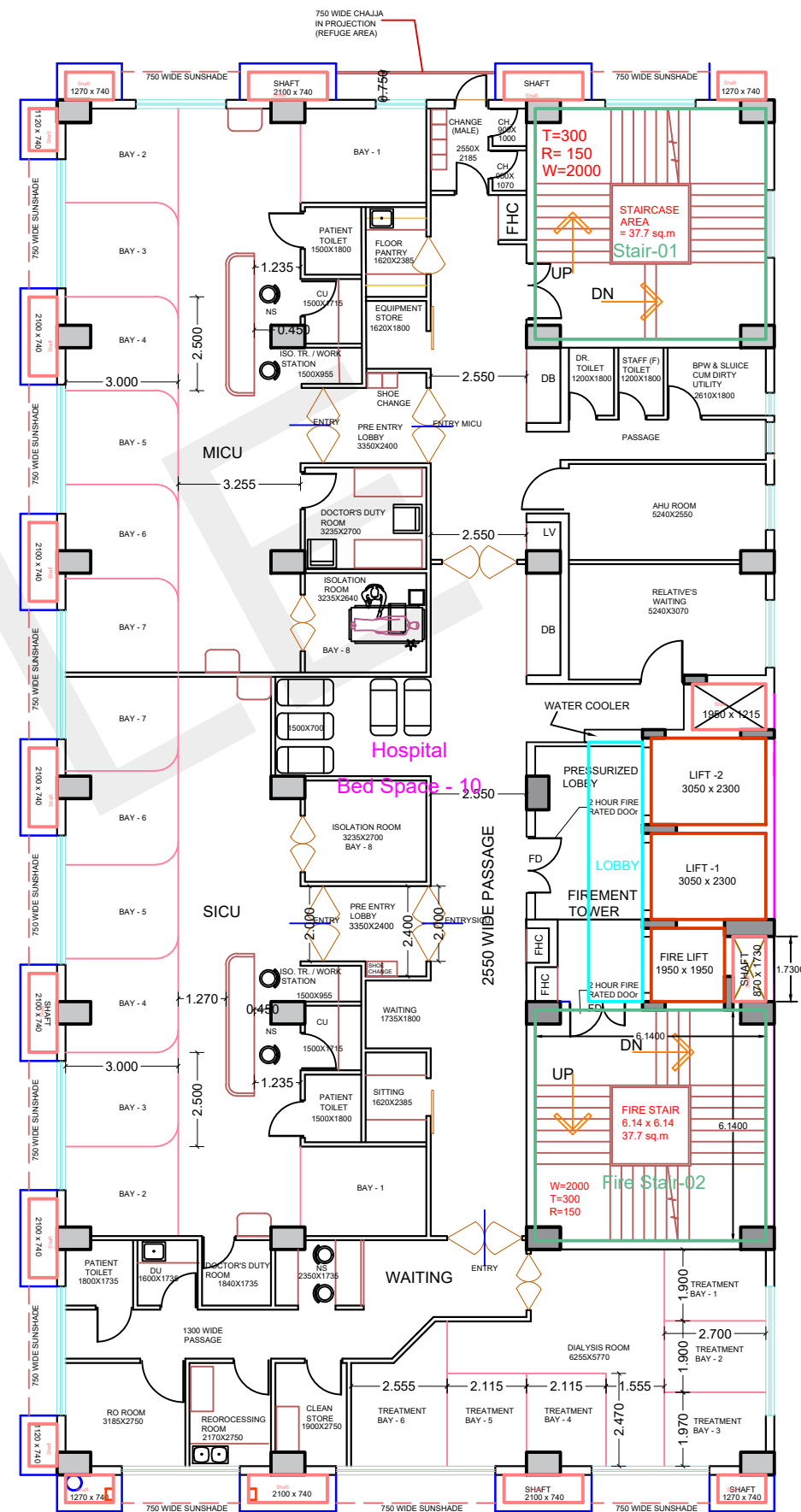
TERRACE COVERAGE PLAN

TERRACE FLOOR PLAN



THIRD FLOOR PLAN

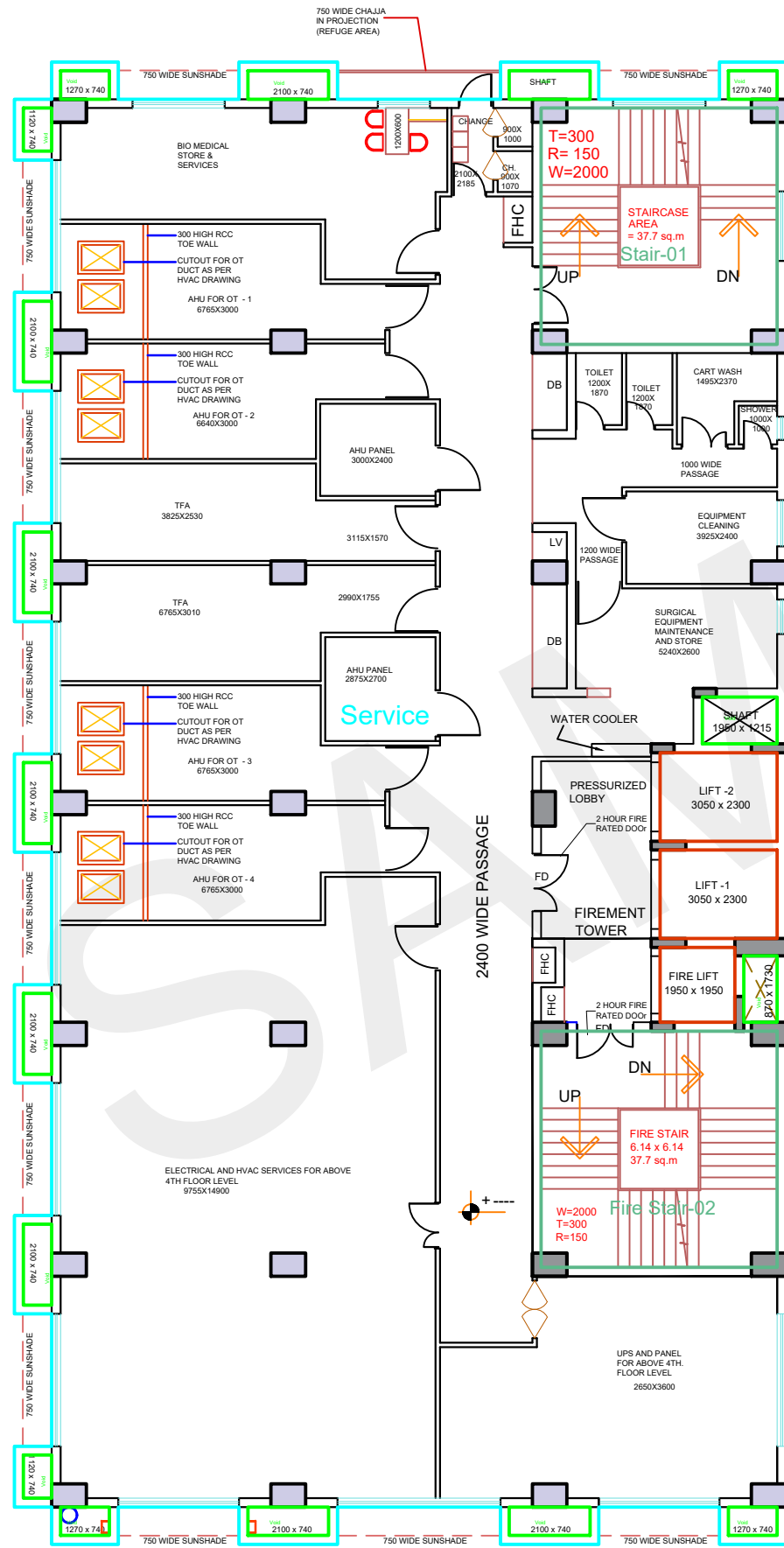
NO. OF BEDS:- 06 NOS



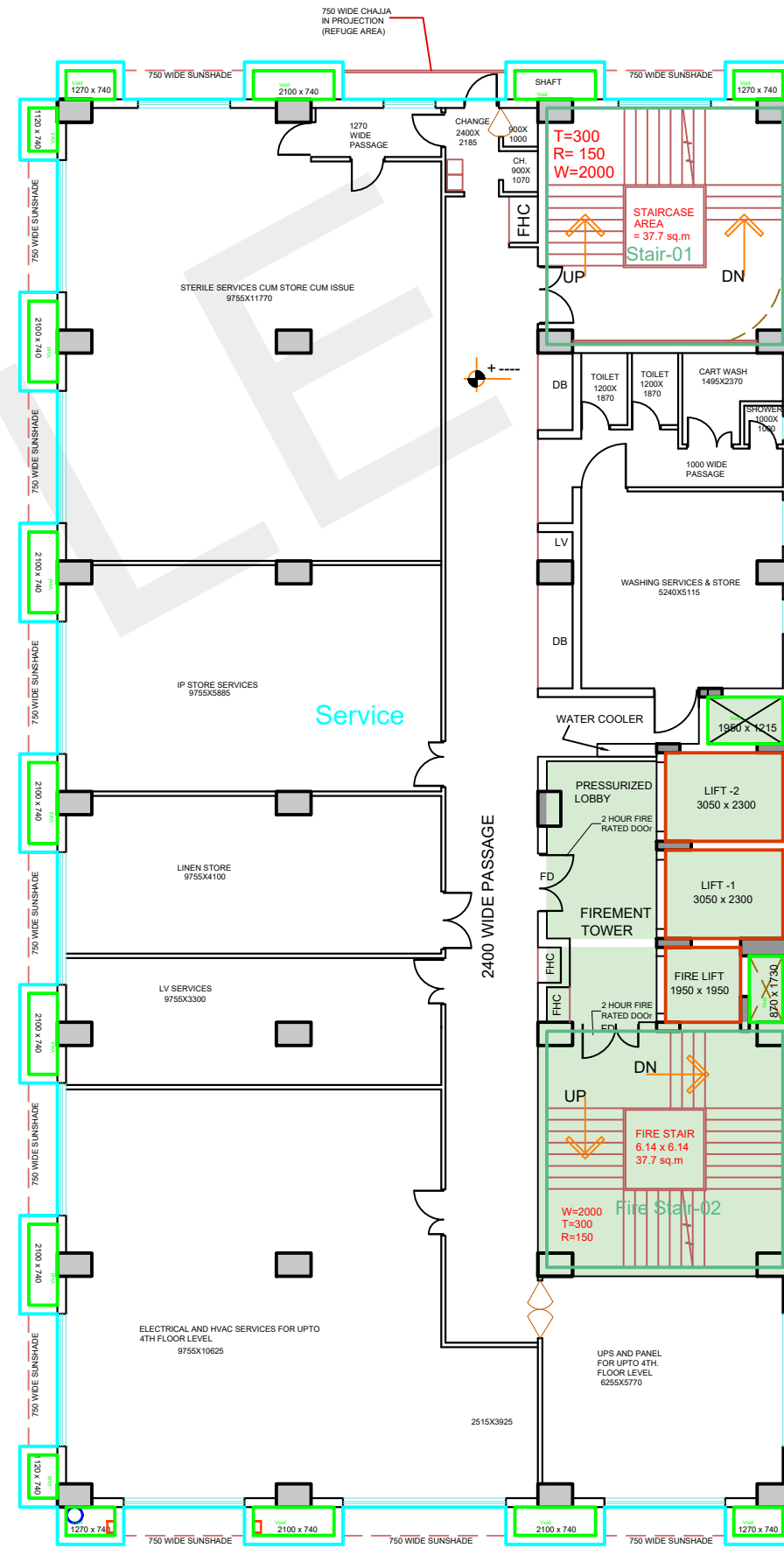
FORTH FLOOR PLAN

NO. OF BEDS:- 16 NOS

THIRD & FOURTH FLOOR PLAN



SERVICE FLOOR
PLAN 01

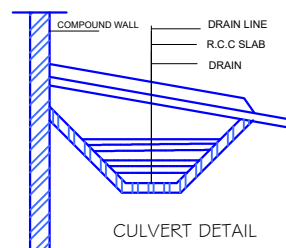
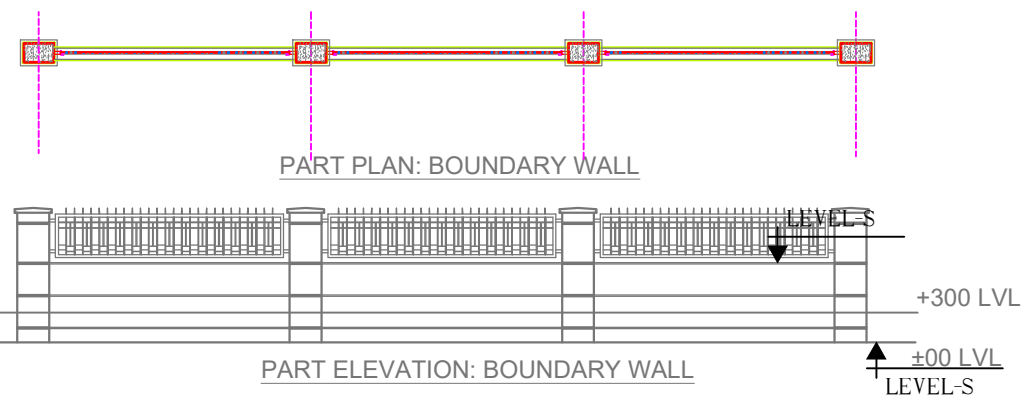
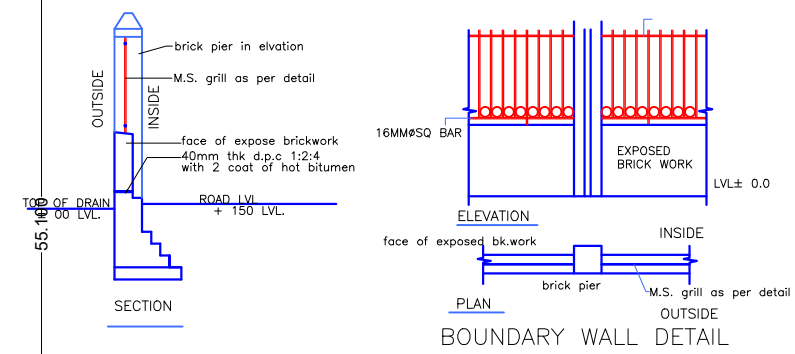
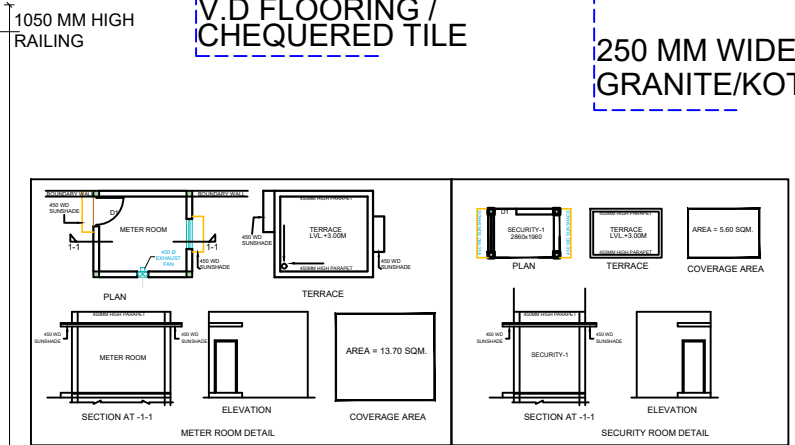
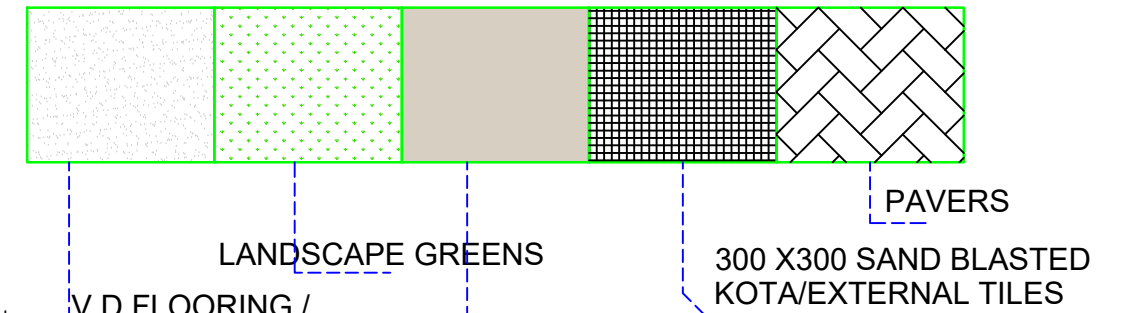
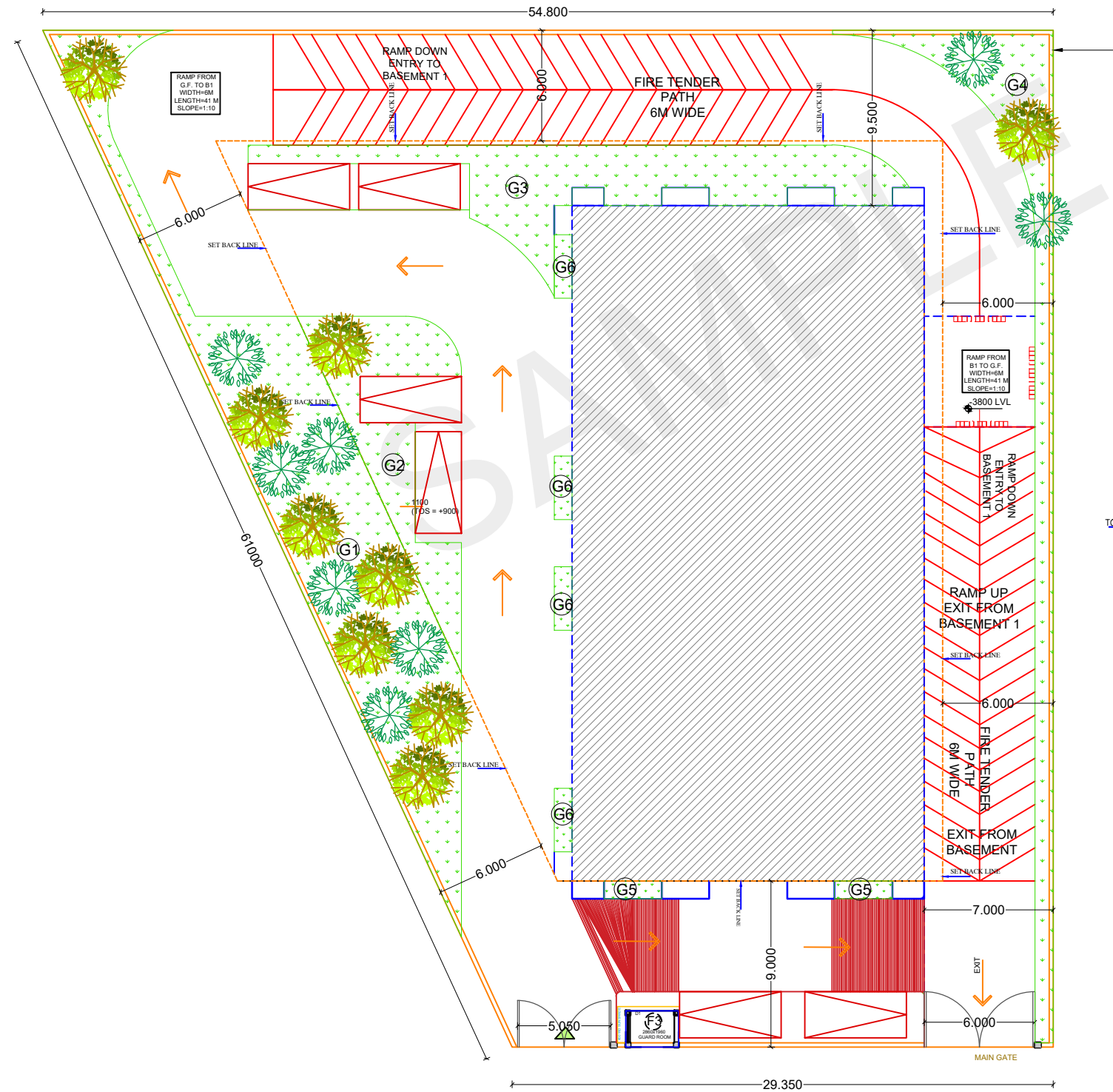


SERVICE FLOOR
PLAN 02

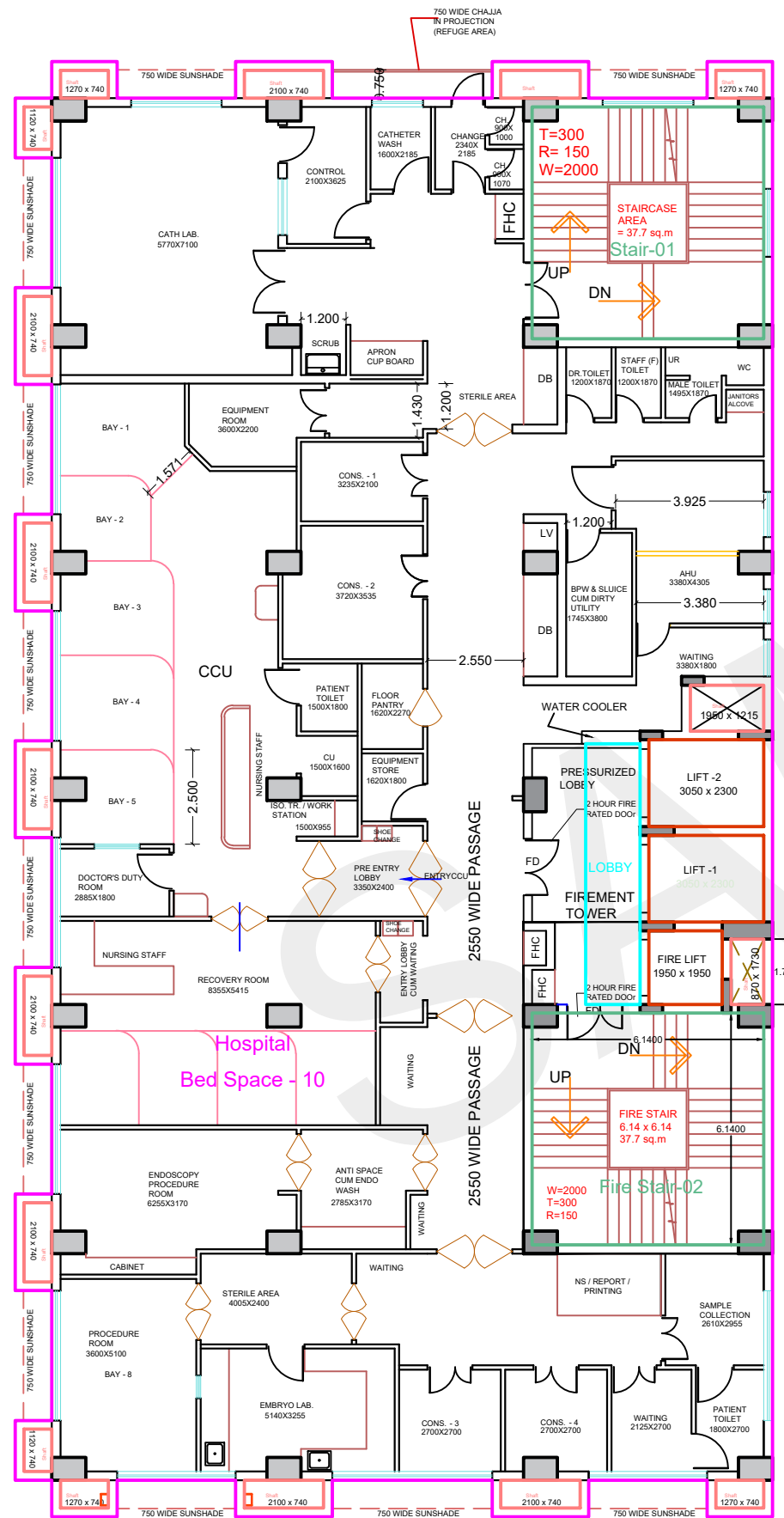
SERVICE FLOOR 1 & 2 PLAN

PLOT AREA = 2442.45 Sq.Mt.
LAND USE = COMMERCIAL
PREMISES USE = HOSPITAL (31)
(For Gr.Cov. & FAR Refer FAQ)

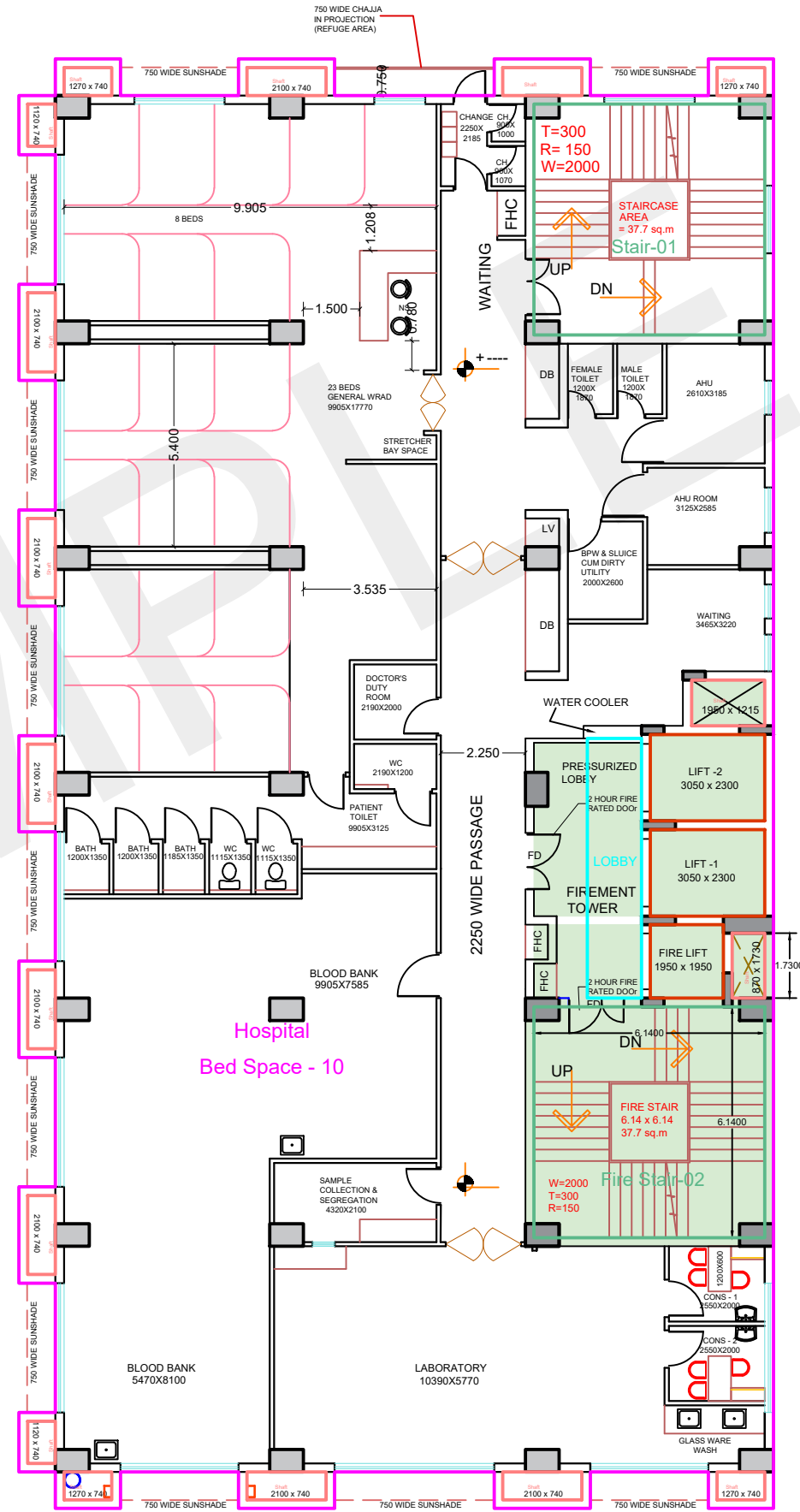
SET BACK :- Front- 9.0 Mt. All Other Side - 6.0 Mt.



SITE PLAN DETAIL



SIXTH FLOOR PLAN



SEVENTH FLOOR PLAN

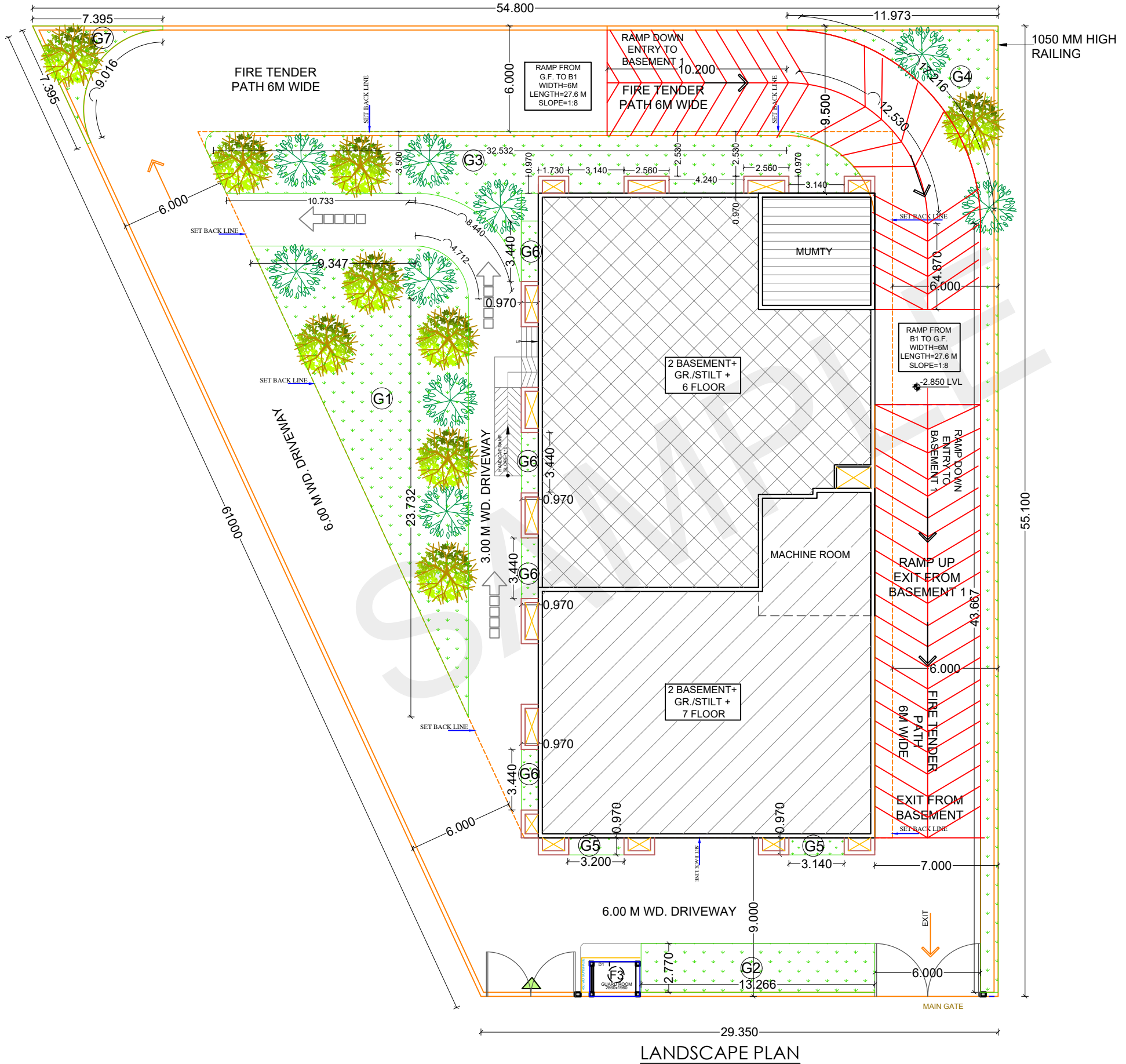
SITH & SEVENTH FLOOR PLAN

NO. OF BEDS:- 05 NOS

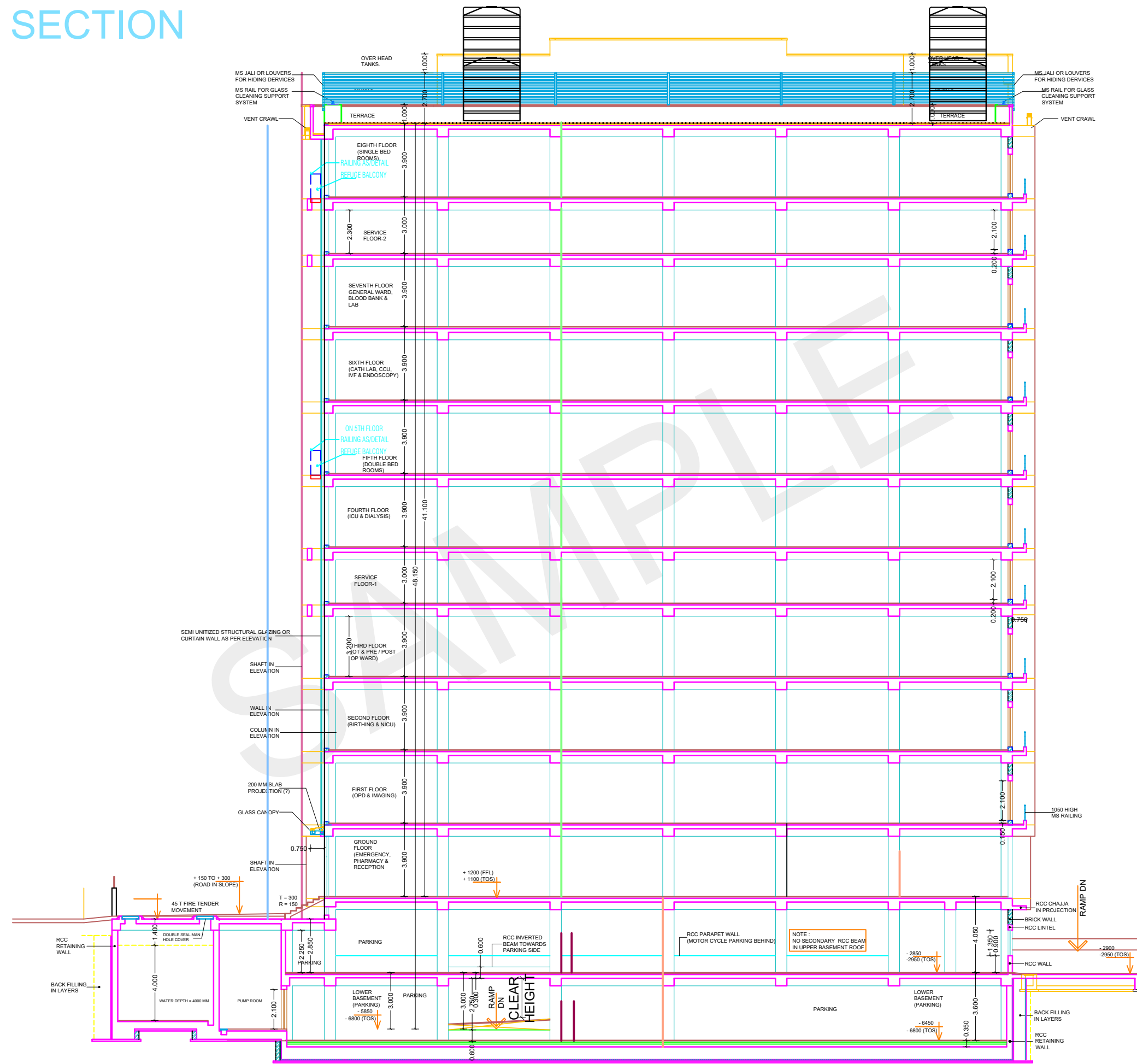
NO. OF BEDS:- 20 NOS

PLOT AREA = 2442.45 Sq.Mt.
LAND USE = COMMERCIAL
PREMISES USE = HOSPITAL (31)
(For Gr.Cov. & FAR Refer FAQ)

SET BACK :- Front- 9.0 Mt. All Other Side - 6.0 Mt.



SECTION



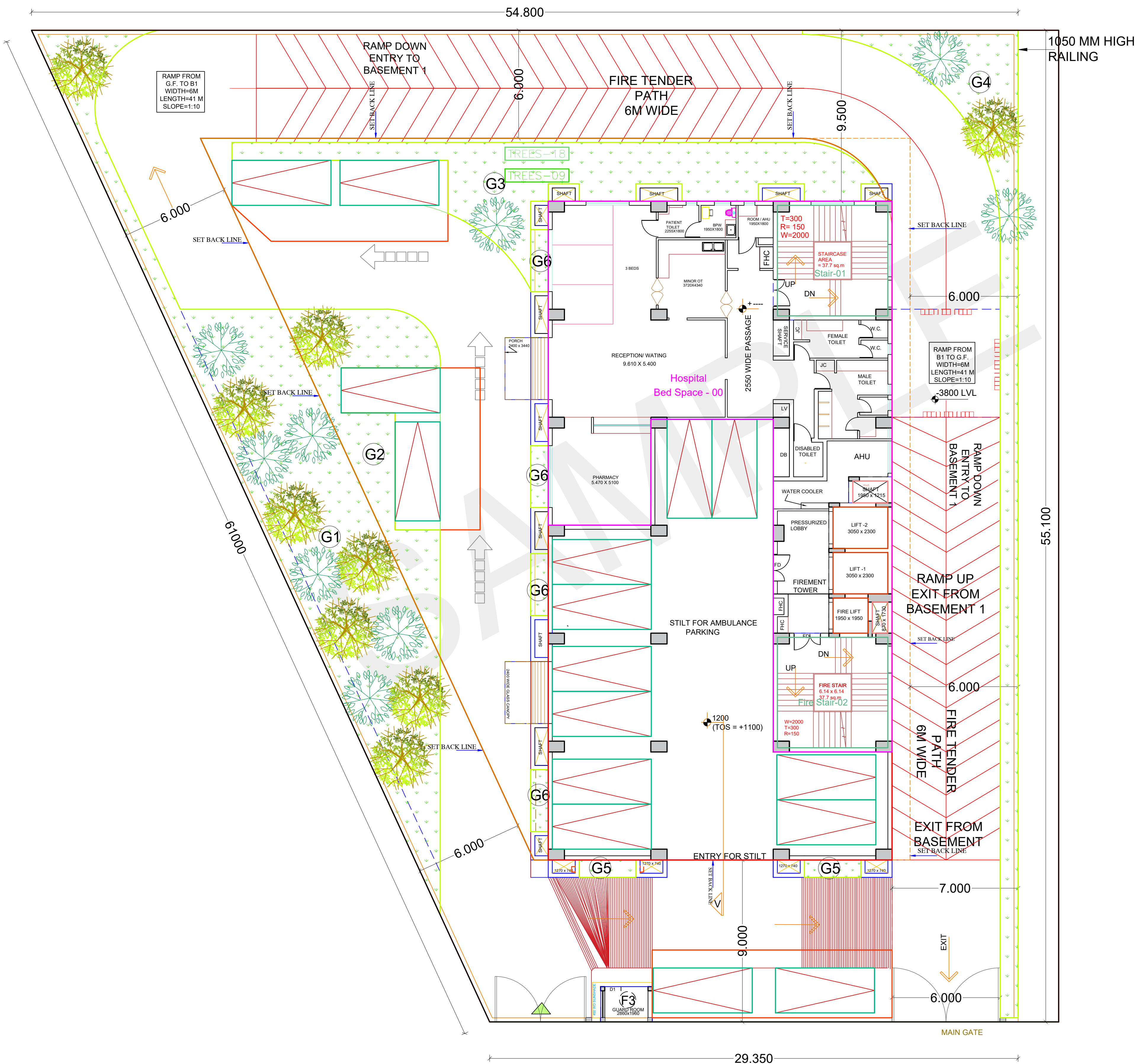
GENERAL SECTION

GENERAL SECTION AT V-V

PLOT AREA = 2442.45 Sq.Mt.
LAND USE = COMMERCIAL
PREMISES USE = HOSPITAL (31)
(For Gr.Cov. & FAR Refer FAQ)

SET BACK :- Front- 9.0 Mt. All Other Side - 6.0 Mt.

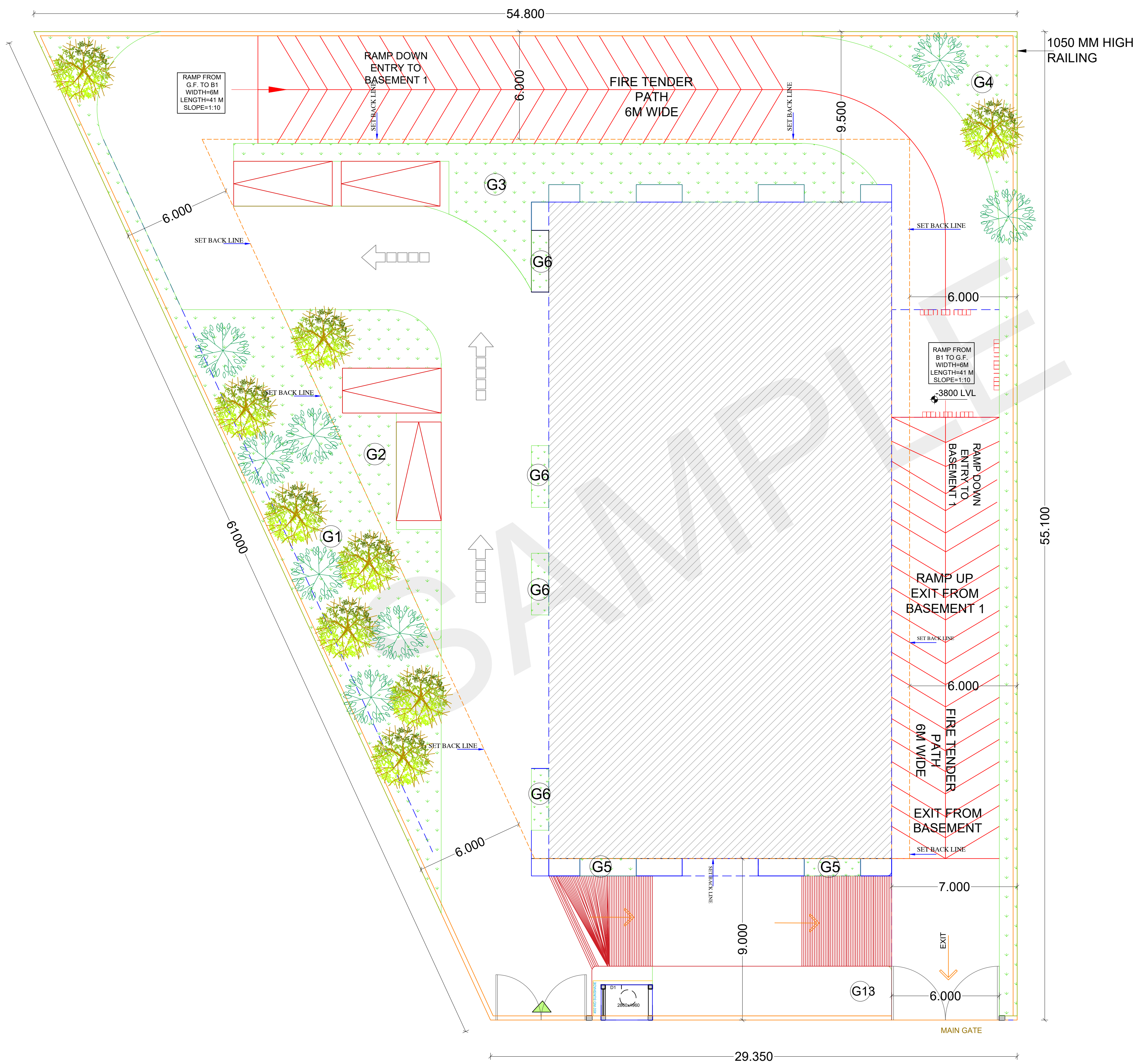
95.00 NOS BED HOSPITAL



GROUND FLOOR PLAN

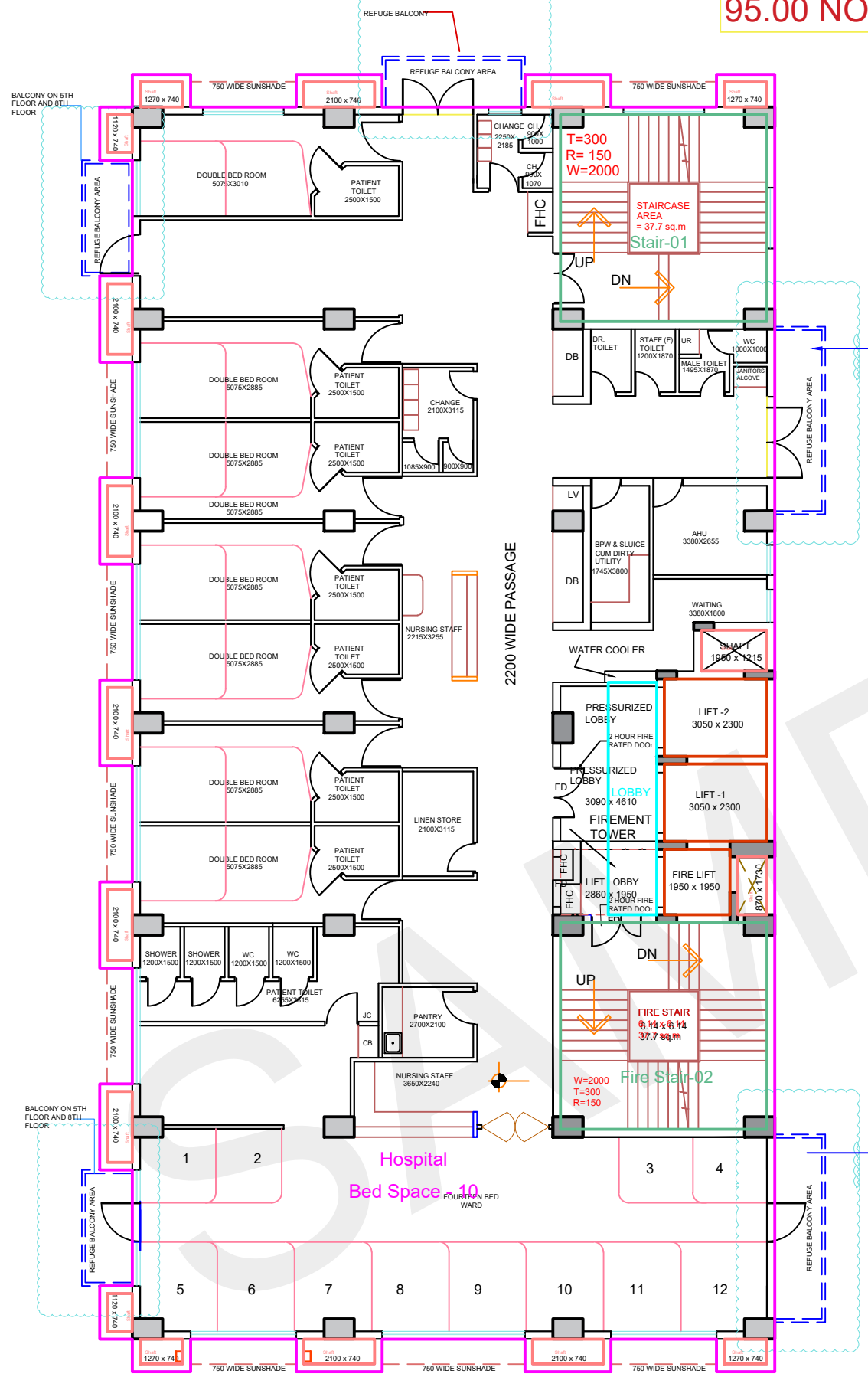
PLOT AREA = 2442.45 Sq.Mt.
LAND USE = COMMERCIAL
PREMISES USE = HOSPITAL (31)
(For Gr.Cov. & FAR Refer FAQ)

SET BACK :- Front- 9.0 Mt. All Other Side - 6.0 Mt.

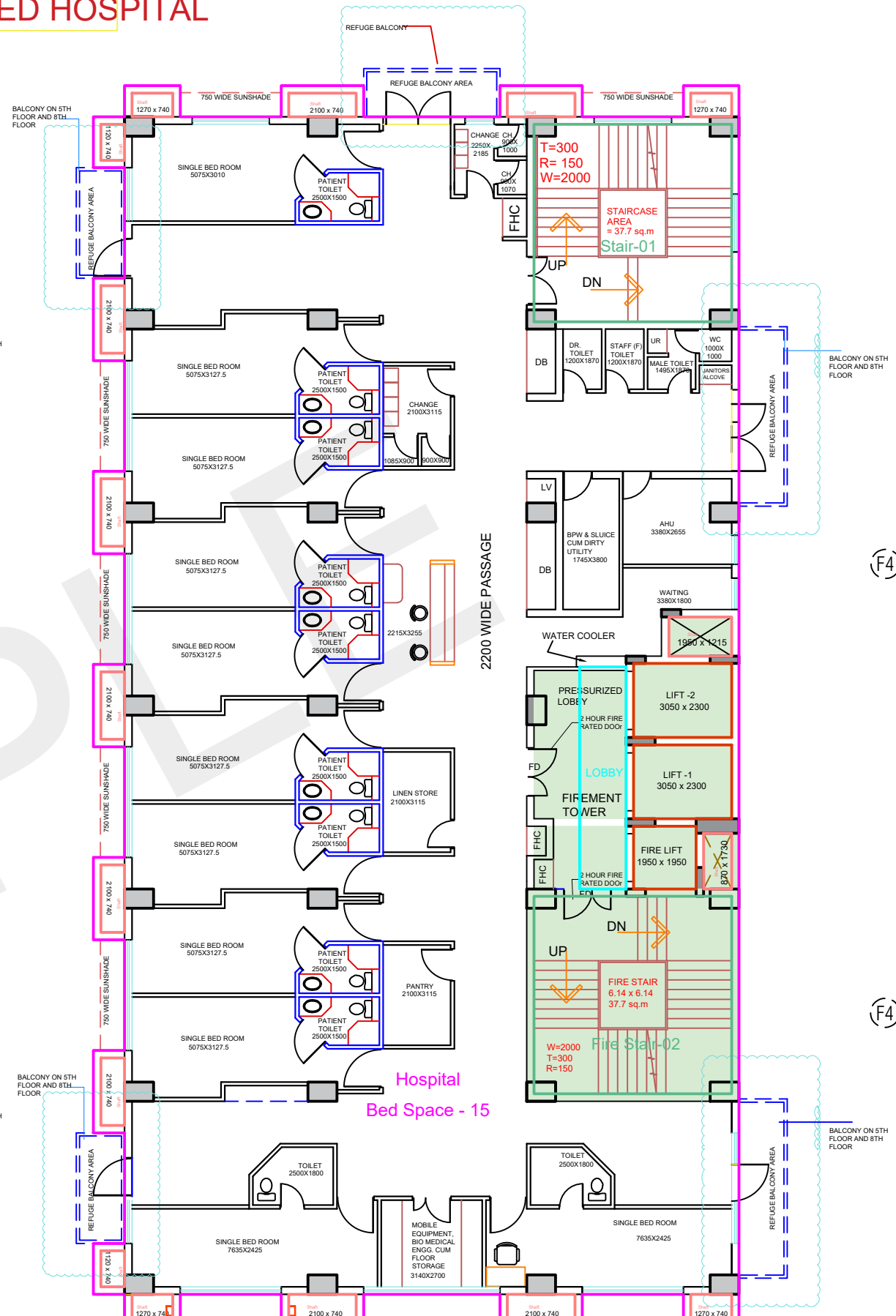


LANDSCAPE PLAN

95.00 NOS BED HOSPITAL



FIFTH FLOOR PLAN

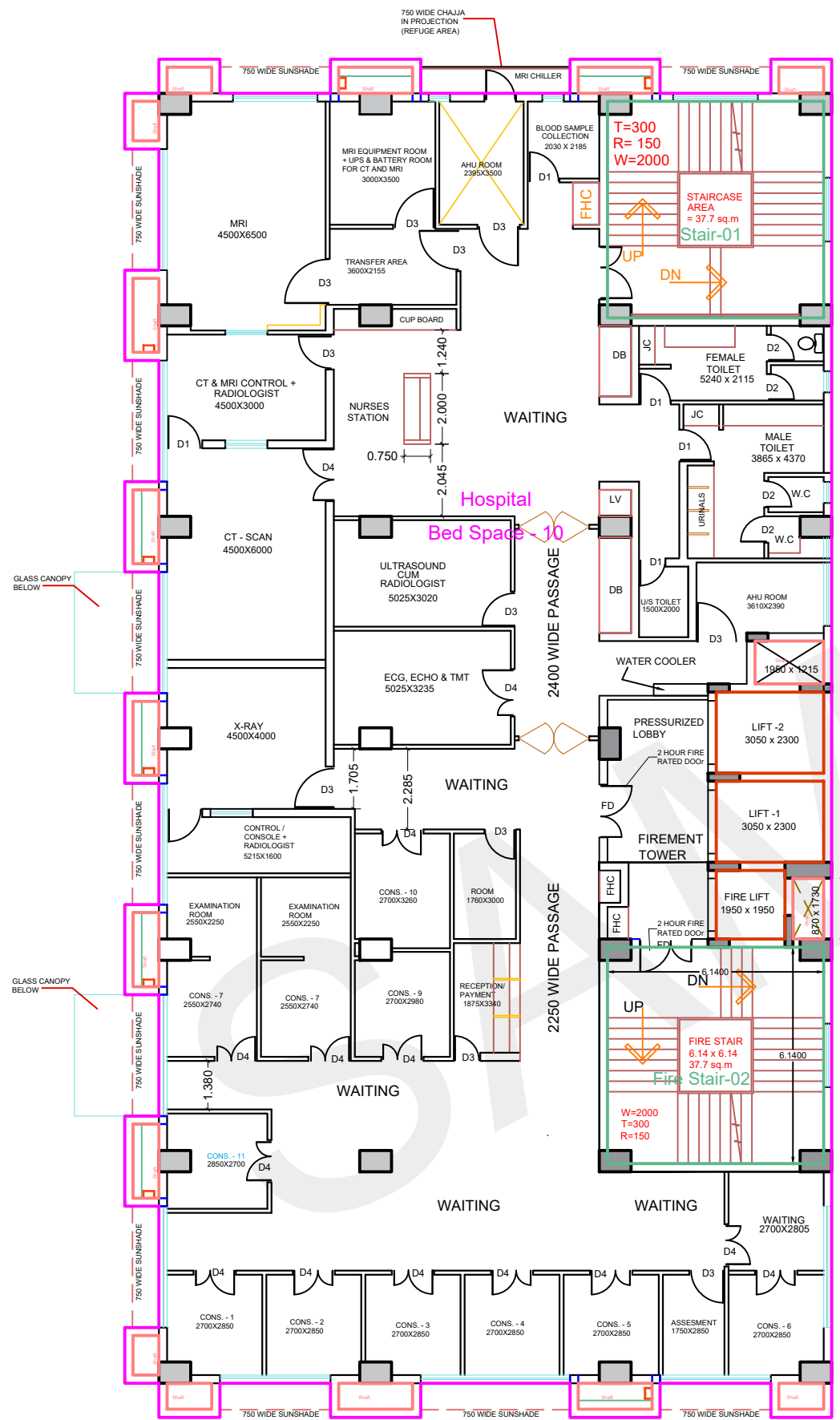


EIGHT FLOOR PLAN

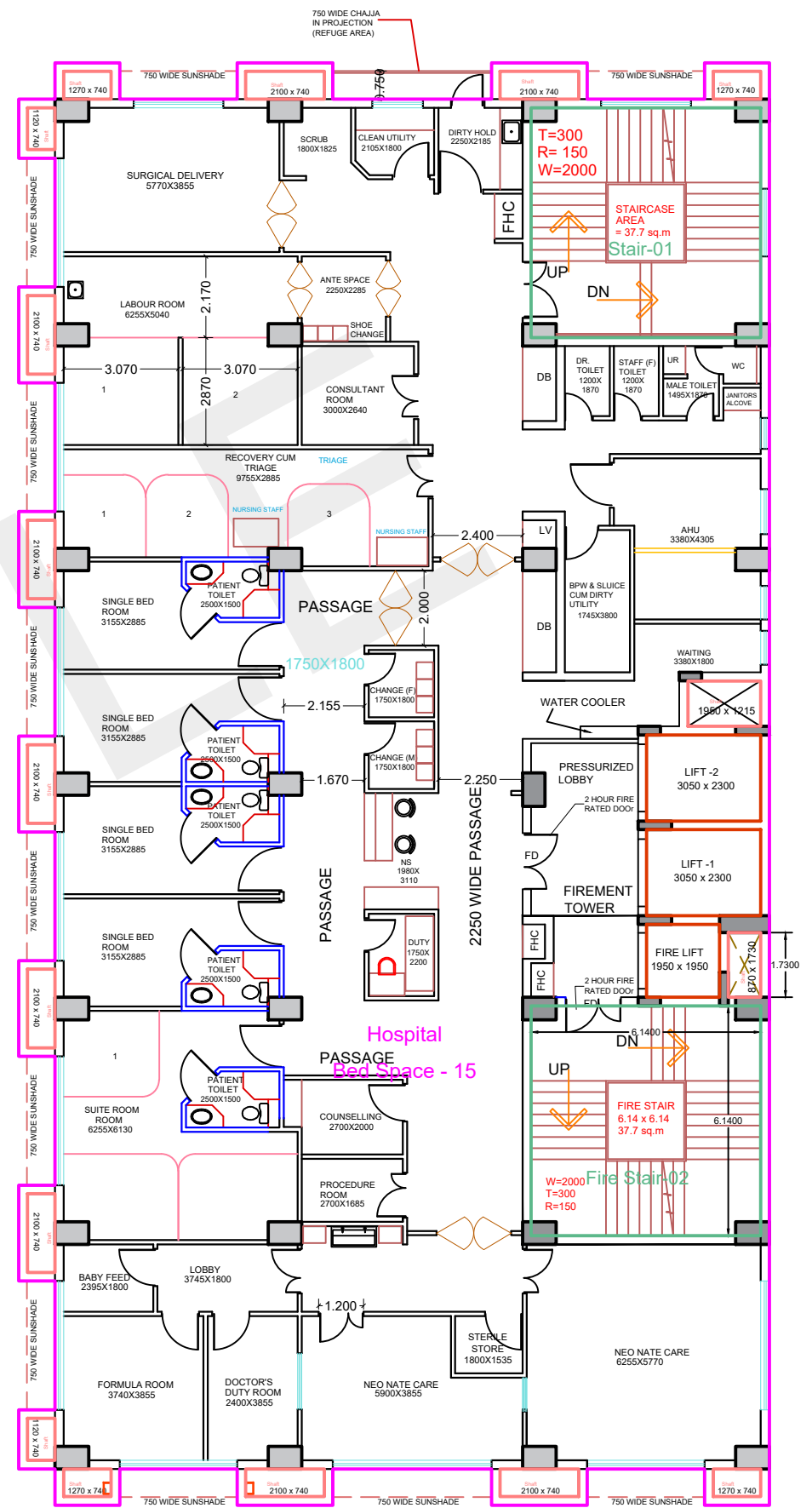
FIFTH & EIGHTH FLOOR PLAN

Hospital Bed Space - 10

Hospital Bed Space - 15



FIRST FLOOR PLAN

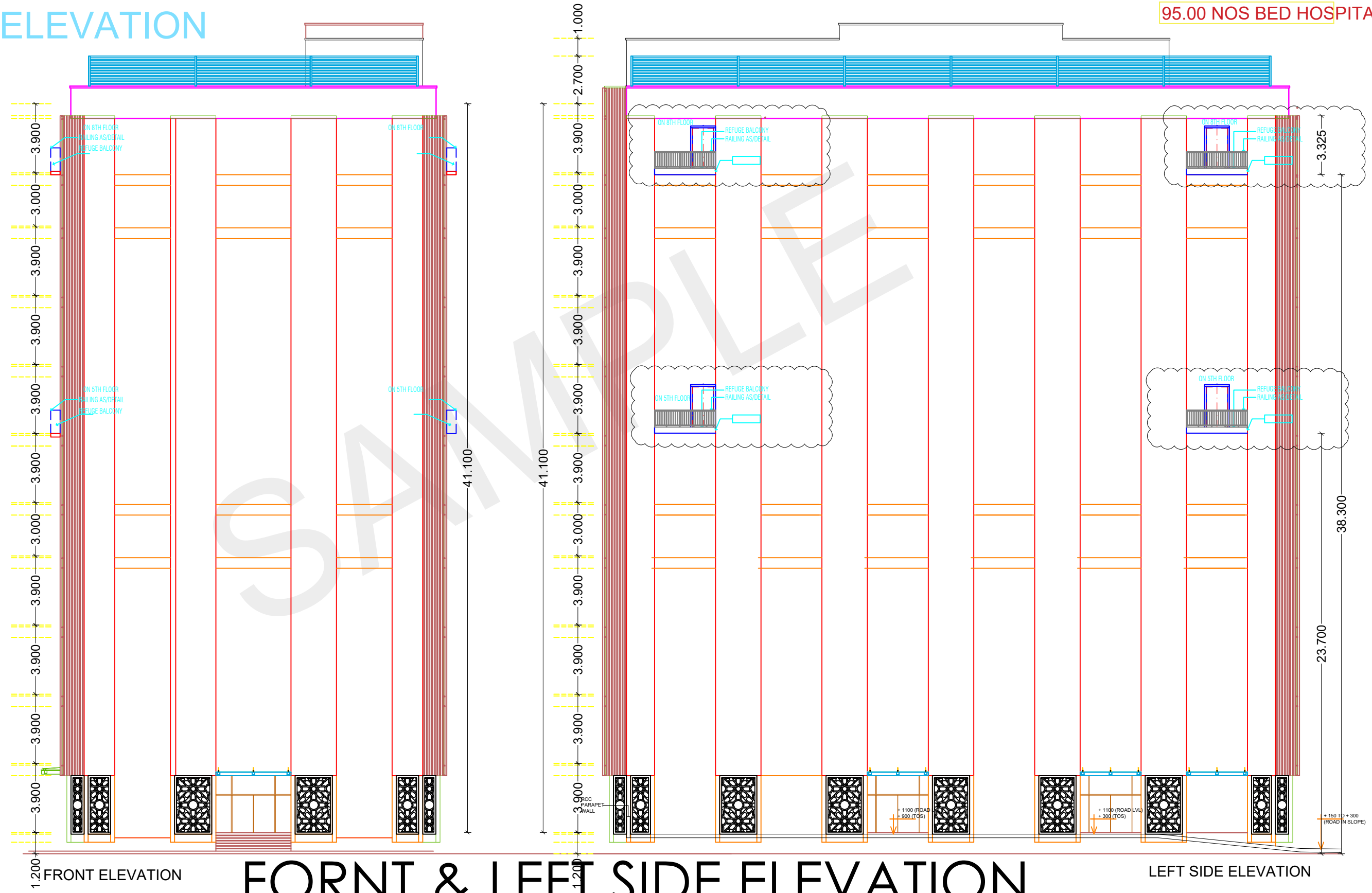


SECOND FLOOR PLAN

FIRST & SECOND FLOOR PLAN

ELEVATION

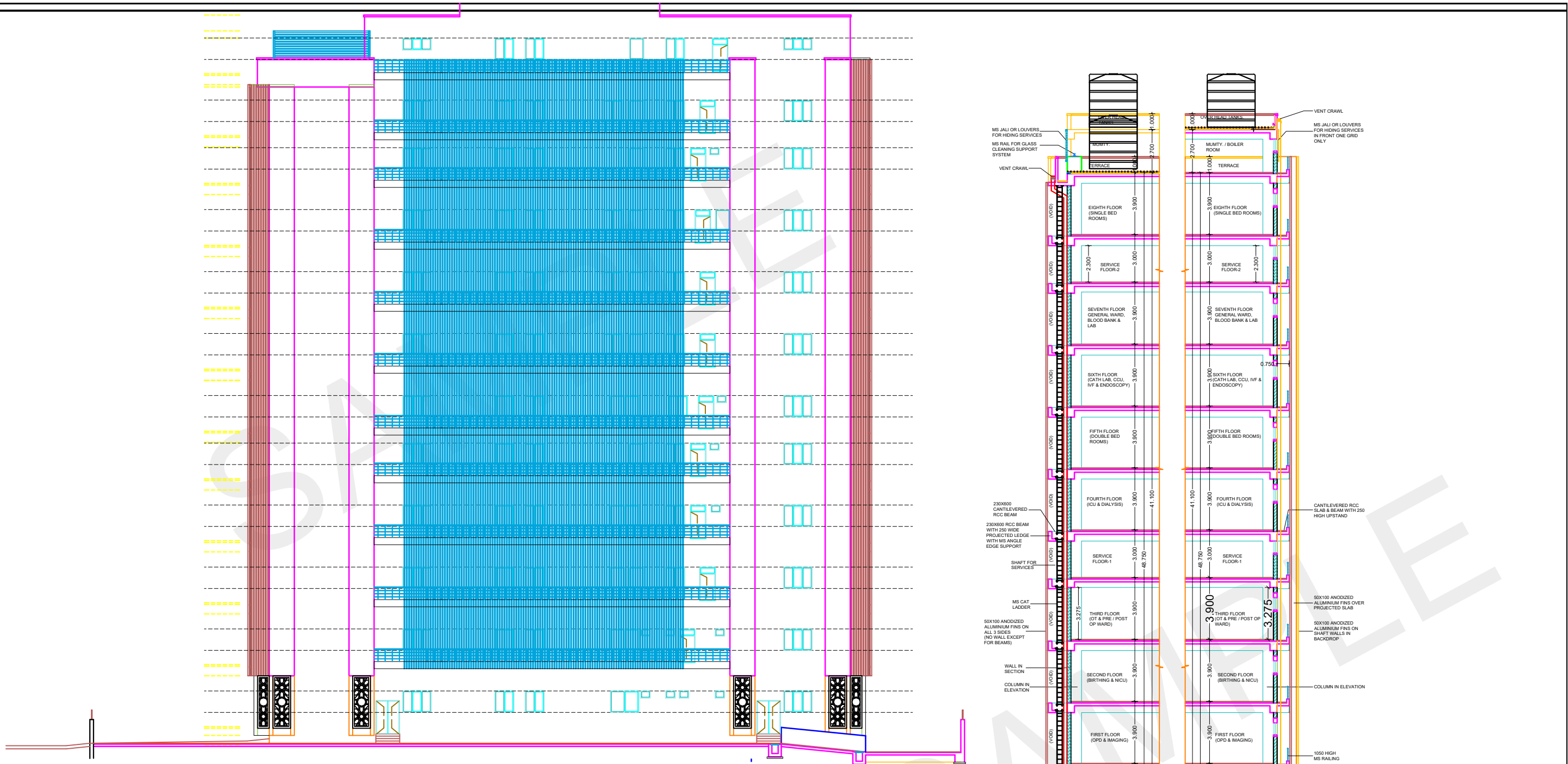
95.00 NOS BED HOSPITAL



FORNT & LEFT SIDE ELEVATION

1.200 FRONT ELEVATION

LEFT SIDE ELEVATION



RIGHT ELEVATION

ELEVATION & SECTION

